

Legend

Contaminated Sites

- Site Locations

Wellfield Protection Zones

- 1 (model and 250 foot radii)
- 2 (model and 500 foot radii)
- 3 (model and 1320 foot radii)

Inland Water

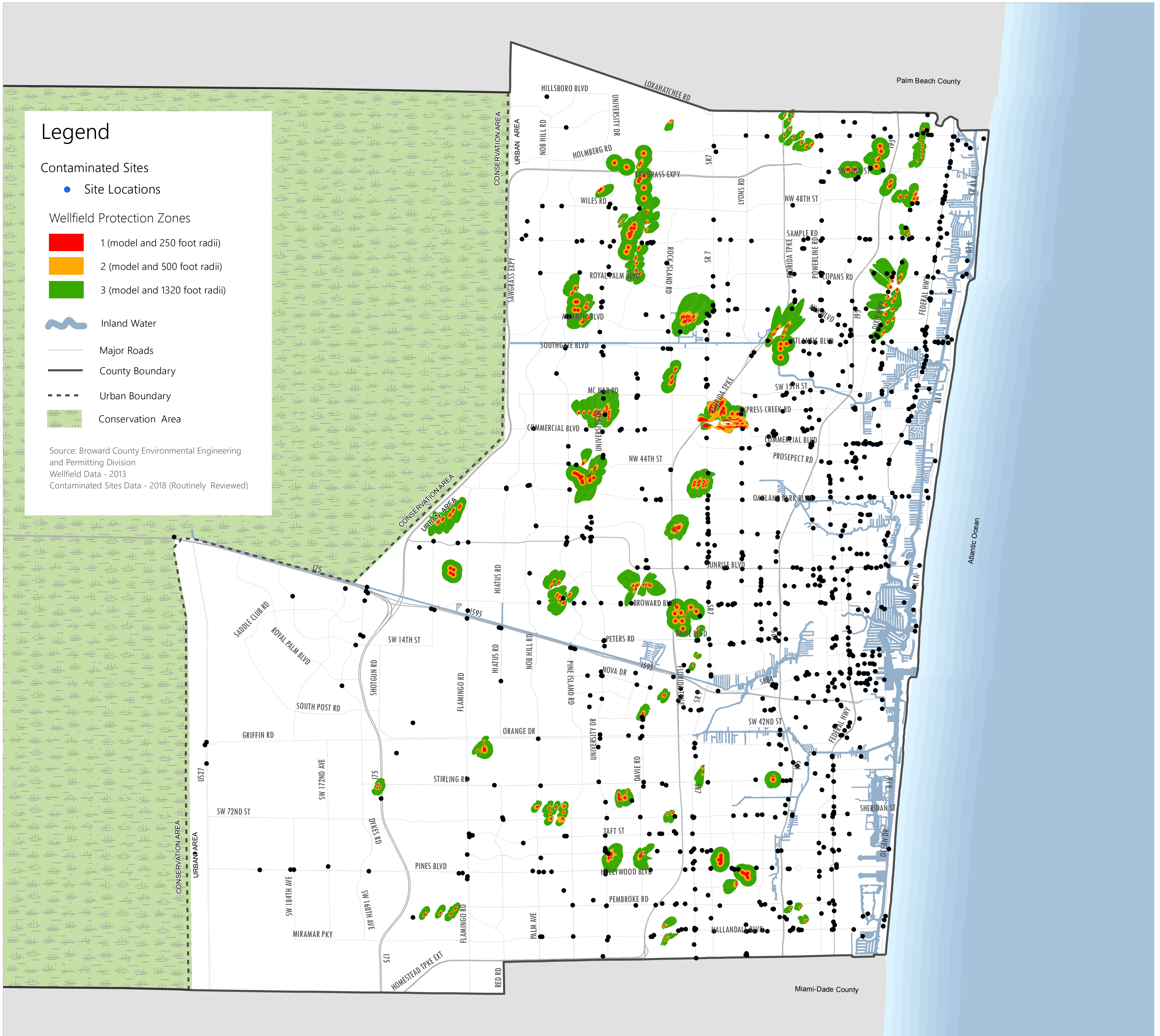
Major Roads

County Boundary

Urban Boundary

Conservation Area

Source: Broward County Environmental Engineering and Permitting Division
Wellfield Data - 2013
Contaminated Sites Data - 2018 (Routinely Reviewed)



This map is for conceptual purposes only and is not intended for legal boundary determinations.

