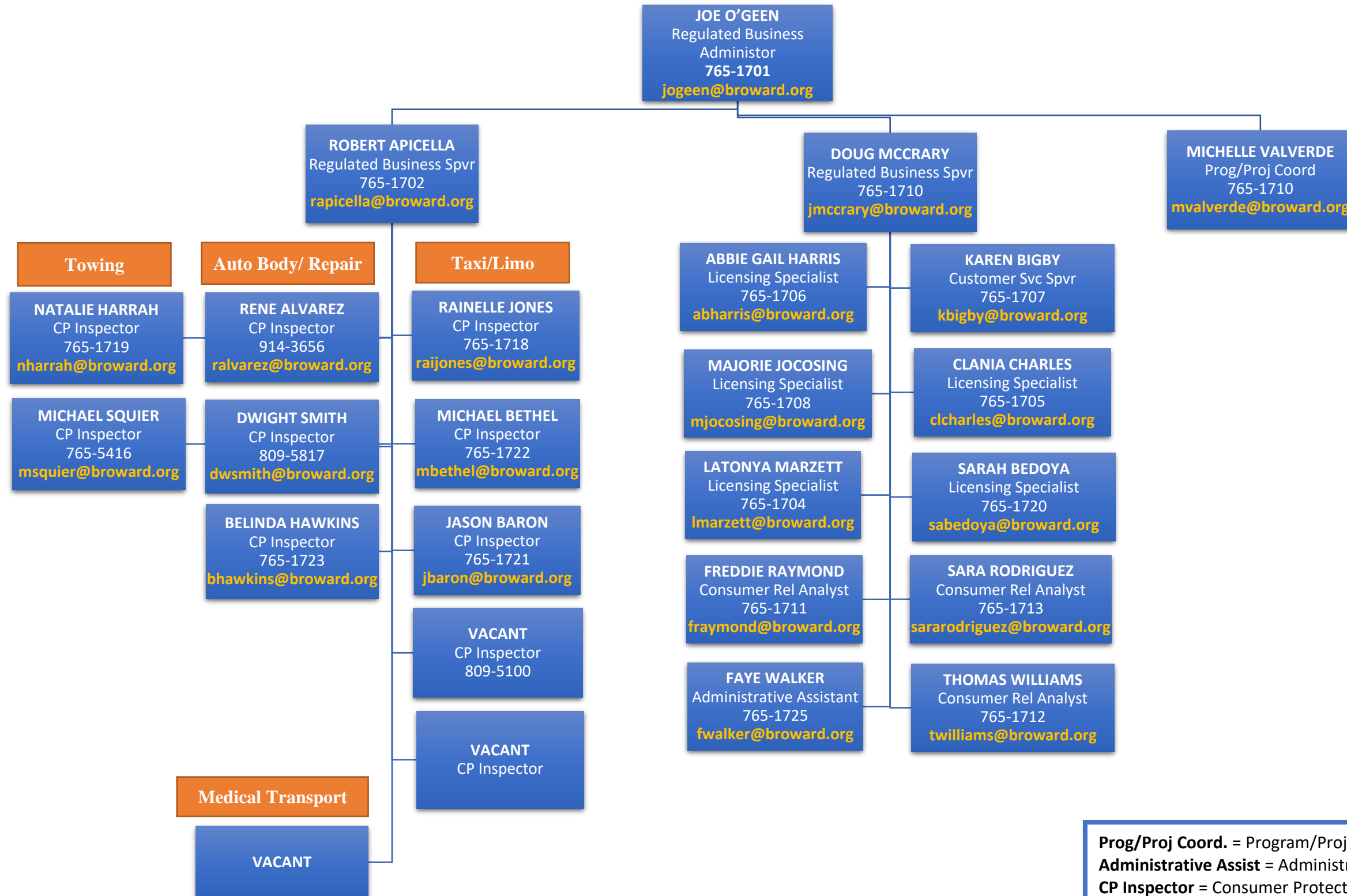


Consumer Affairs

Consumer Protection Division

Main Line: (954) 765-1700
Email: consumer@broward.org



Prog/Proj Coord. = Program/Project Coordinator
Administrative Assist = Administrative Assistant
CP Inspector = Consumer Protection Inspector
Consumer Rel Analyst = Consumer Relations Analyst
Med Transp Inspector = Medical Transport Inspector
Customer Svc Spvr = Customer Service Supervisor