



Department of Public Works • Water & Wastewater Services

**WATER & WASTEWATER ENGINEERING DIVISION**

2555 West Copans Road • Pompano Beach, Florida 33369 • 954-831-0745 • FAX 954-831-0798/0925

**GUIDELINE FOR WALLS/FENCES ACROSS BCWWS EASEMENTS**

Date: August 15, 2008

Date Last Issued: None

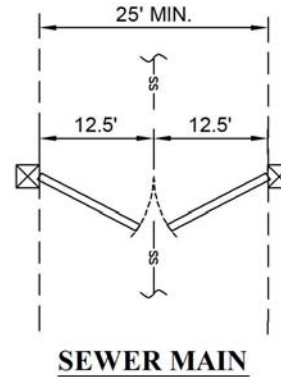
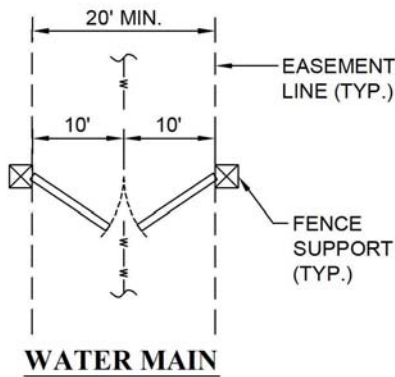
Date First Issued: None

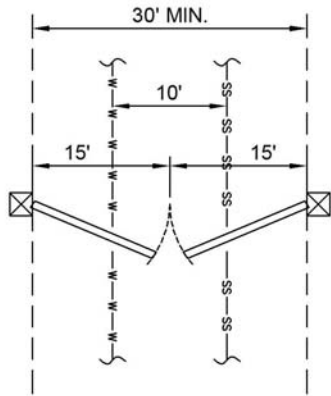
file: Guidelines For Walls-Fences Across BCWWS Easements 080813

This document approved by the Broward County Water & Wastewater Services Technical Standards Committee.

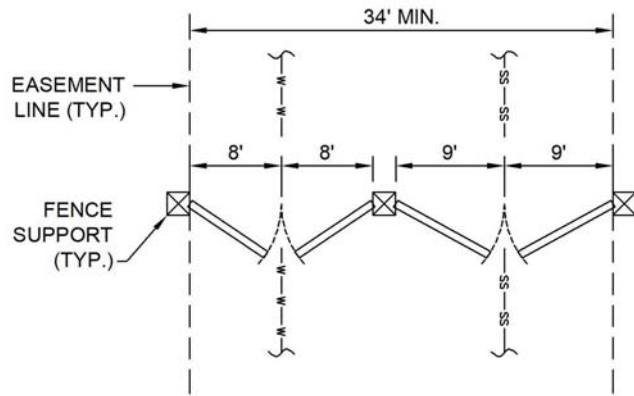
Steven W. Uhrick, P.E., August 13, 2008

In no case shall a fence or wall be allowed to run inside and more or less parallel to a BCWWS easement. Chain link fences will be allowed to perpendicularly cross a BCWWS easement. Should the developer request that a wall or fence other than chain link cross a BCWWS easement, a gate will be required according to the following standards:





**WATER AND SEWER OPTION #1**



**WATER AND SEWER OPTION #2**

**NOTES:**

- 1) Sliding gates may be used in lieu of swinging gates.
- 2) Posts, columns, or other fence supports shall not encroach upon the provided easement.
- 3) Gates may be secured by the "chain and lock" method, BCWWS does not require a key.