



# **Spangler / Eisenhower Boulevard Bypass Road**

## **Presentation of Phase I and II Proposed Projects**

**Port Everglades Department**

**April 2013**



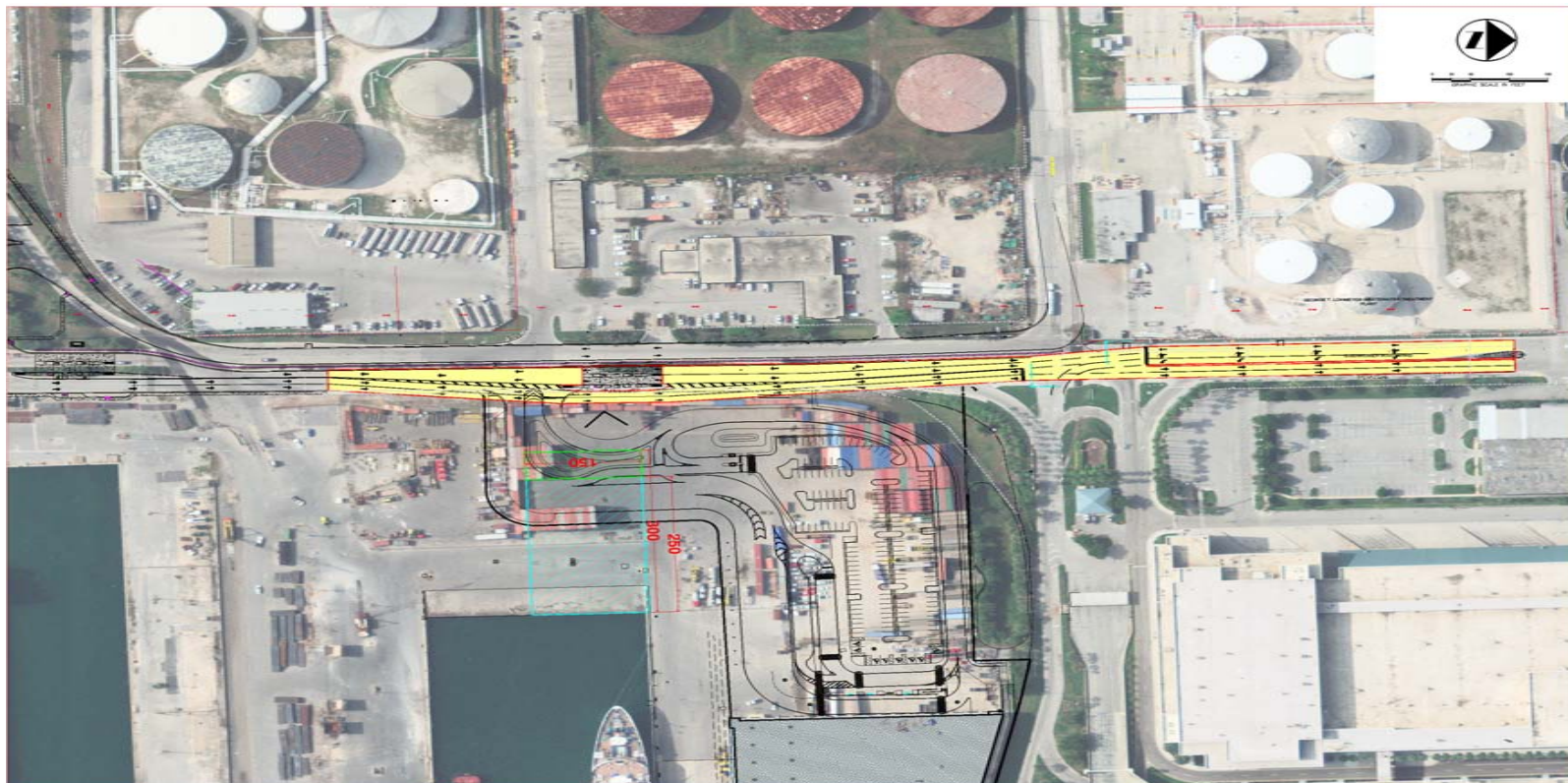
### History/Background

- Temporary security checkpoints installed at Port entrances after 9/11, with all permanent checkpoints completed by 2005
- Fort Lauderdale contention: Installation of checkpoints a violation of the DRI Development Order
- County contention: All mitigation and roadway improvements required by the DRI Development Order have been completed; installation of checkpoints required by Federal and state law
- 2006 Port Master/Vision Plan included a bypass road concept
- Two Phase approach to project was developed in 2009
- Programming study on project completed in December 2010
  - Phase 1 moved into design
  - Phase 2 was placed on hold while Phase 1 was being designed



## Bypass Road – Phase 1

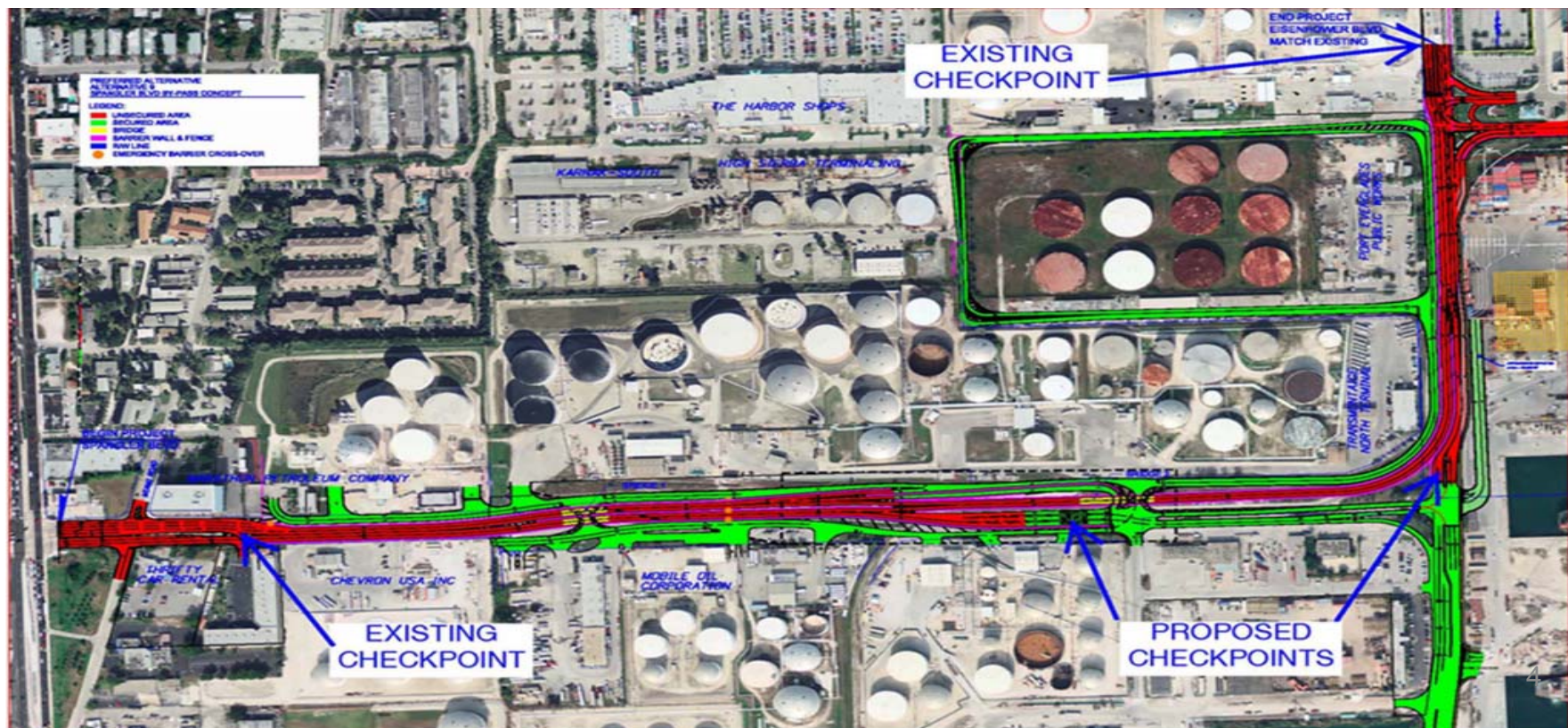
- Carve out the Convention Center from the Port's security perimeter by relocating Eisenhower security gate south and completing related security improvements
- Design completed in November 2012
- Construction contract award estimated for November 2013
- Construction completion estimated for March 2015





## Bypass Road – Phase 2

- Provide public access from US-1 to SE 17<sup>th</sup> Street through the Port to re-establish a public corridor along Spangler and Eisenhower Blvds. while also maintaining a secure corridor





### Cost Estimates

- 2006 Master/Vision Plan single phase project order of magnitude estimate was \$30M (no environmental remediation consideration)
- Most Current Estimates
  - Phase 1 - \$13.5M (\$7.5M roadway/\$3M NP garage security screening/\$3M environmental remediation)
  - Phase 2 - \$54M-\$80M depending on magnitude of environmental remediation
- \$13.8M FDOT grant programmed for FY 14/15 based upon original \$30M estimate