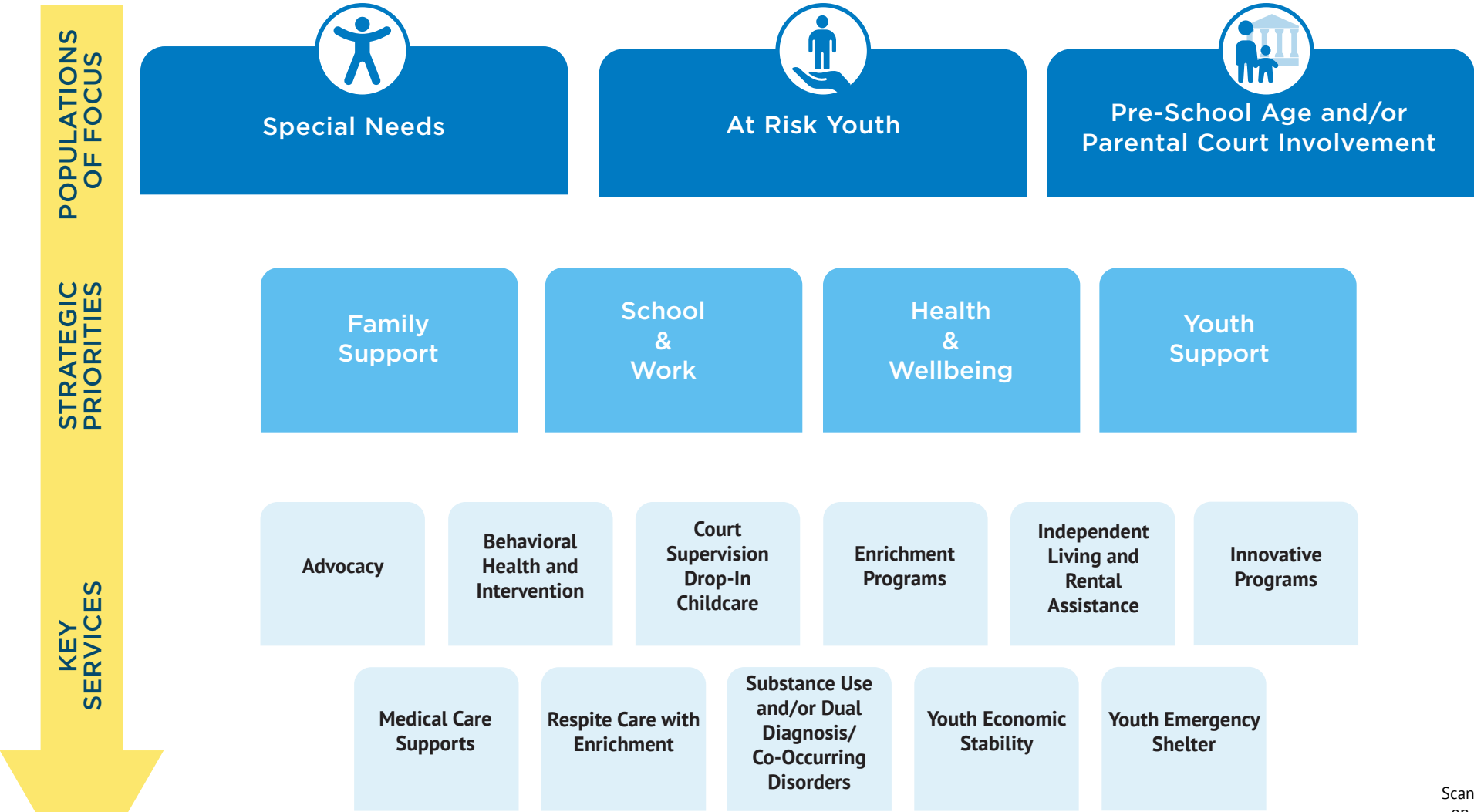


# Children's Services Administration STRATEGIC PLAN

Broward County Human Services Department - Community Partnership Division

Children's Services Administration (CSA) is dedicated to promoting the well-being, safety, and healthy development of children and families in Broward County. The strategic plan aims to provide a structured framework for CSA to define our goals and objectives and outline the actions needed to achieve them.



*CSA aims to foster collaboration with community partners to develop and deliver innovative and responsive services that meet the diverse needs of children and their families in Broward County.*

Scan here to view on our website

