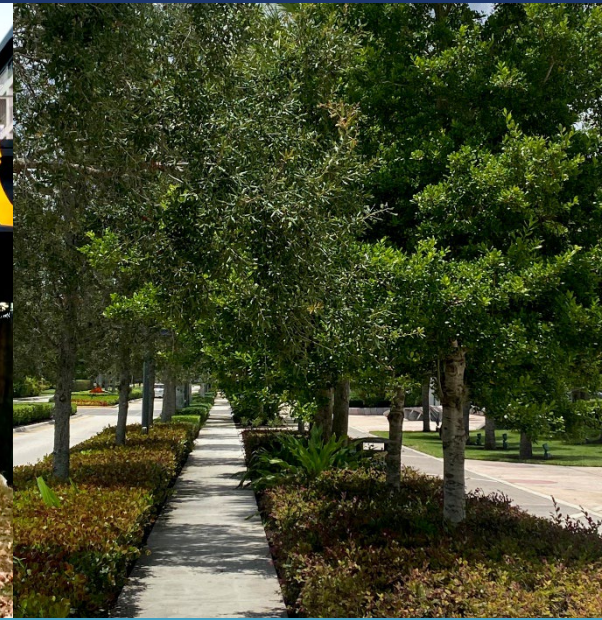


BROWARD COUNTY

Low Stress Multimodal Mobility Network Master Plan



Municipal Workshop



Virtual Meeting
April 8, 2024
Project ID: TRN212266P1

Agenda

- Introductions
- Project Overview
- Proposed Low Stress Network (LSN)
- Introduction to Crowdsourc Map, Public Comment Tool
- Crowdsourcing Map Activity
- Discussion
- Q & A



Project Overview



Project Overview

Vision



To create an inclusive low-stress multimodal transportation network for all ages and abilities in Broward County.

Foundational Principles

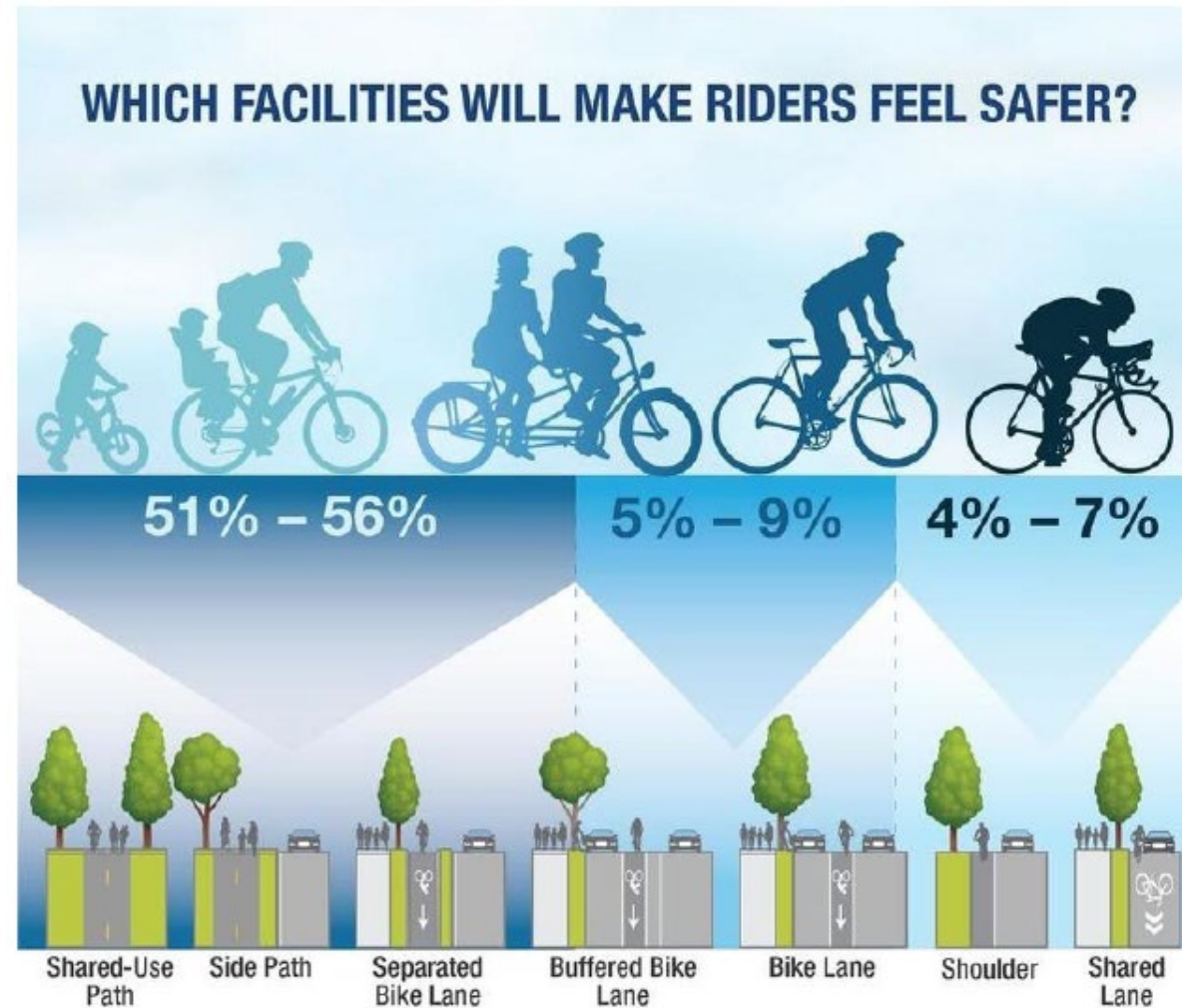


Scope Overview

1. Project Management
2. Public Engagement & Outreach
3. Existing Conditions
4. Needs Assessment
5. Feasibility Analysis
6. Design Manual
7. Final Report



Low Stress Networks (For example, Bicycling)



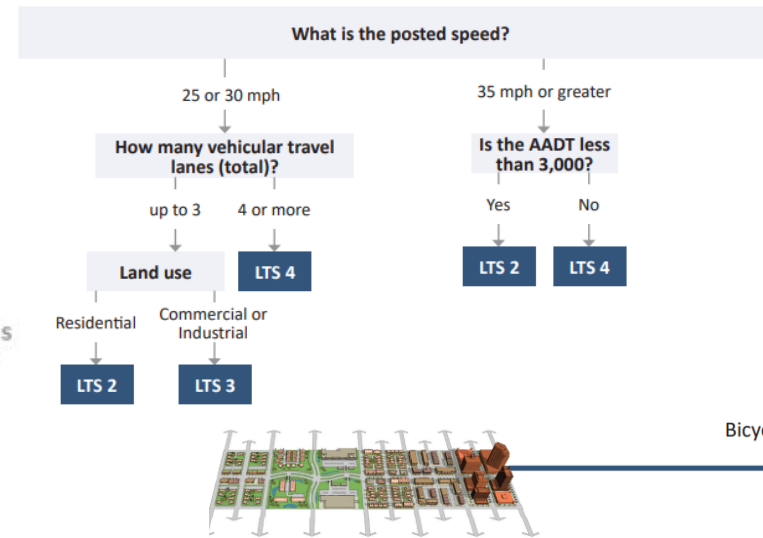
Level of Traffic Stress



Source: FDOT

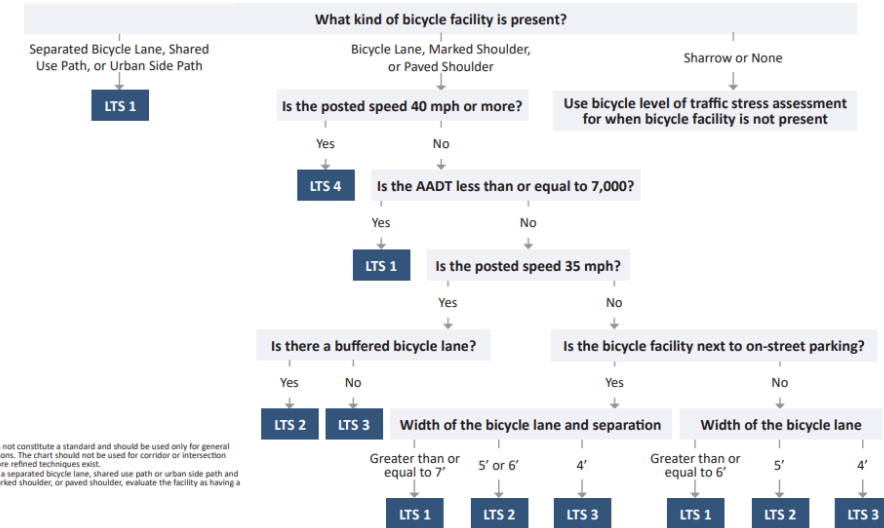
Bicycle Level of Traffic Stress Flow Chart to use When No Bicycle Facility is Present or When There are Sharrows Present

C2T, C3C, C3R, C4, C5, & C6



Bicycle Level of Traffic Stress Flow Chart to use When Bicycle Facility is Present

C2T, C3C, C3R, C4, C5, & C6



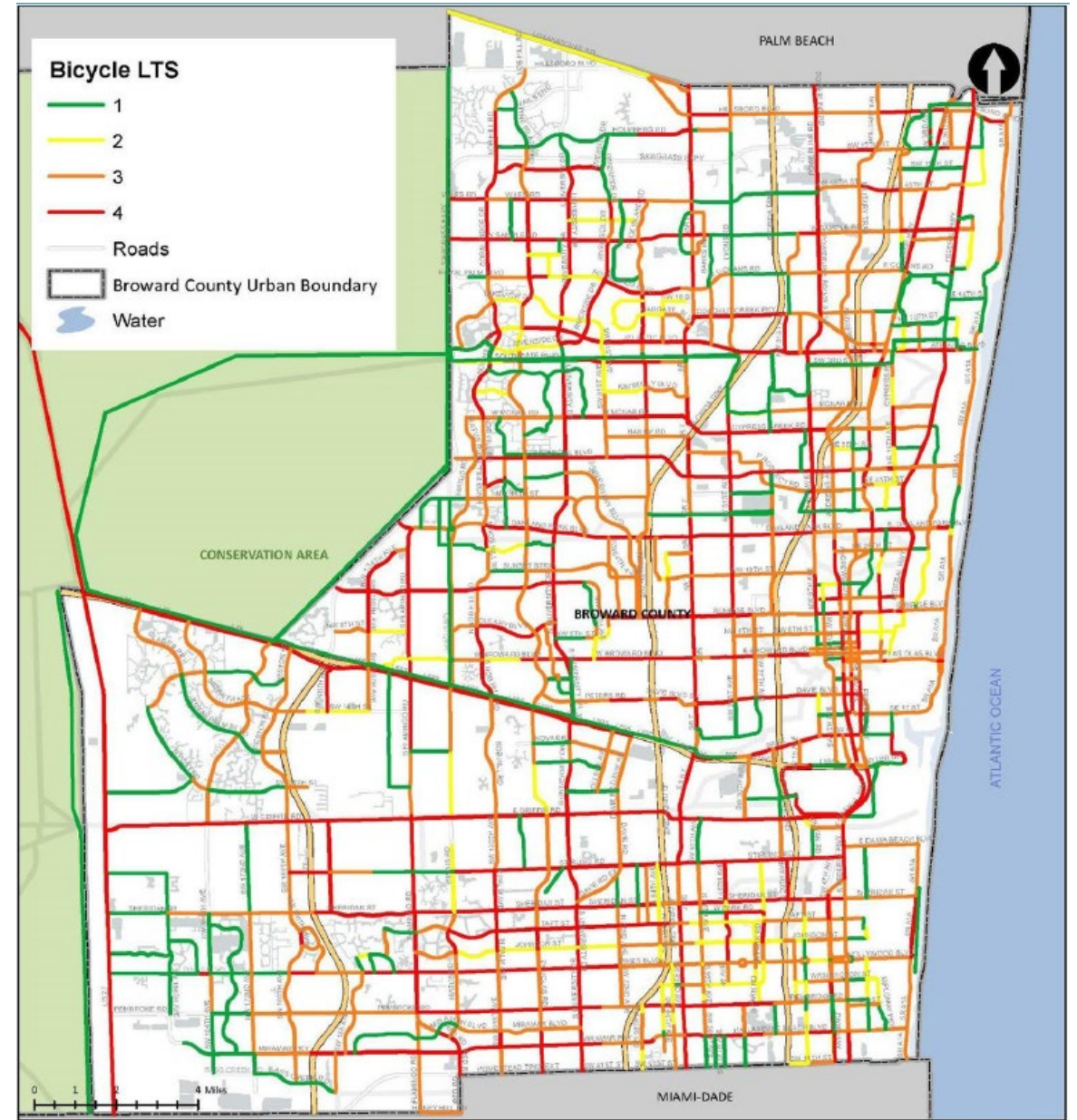
Notes:
 1) This chart does not constitute a standard and should be used only for general planning applications. The chart should not be used for corridor or intersection design, where more refined techniques exist.
 2) If there is both a separated bicycle lane, shared use path or urban side path and a bicycle lane, marked shoulder, or paved shoulder, evaluate the facility as having a shared use path.



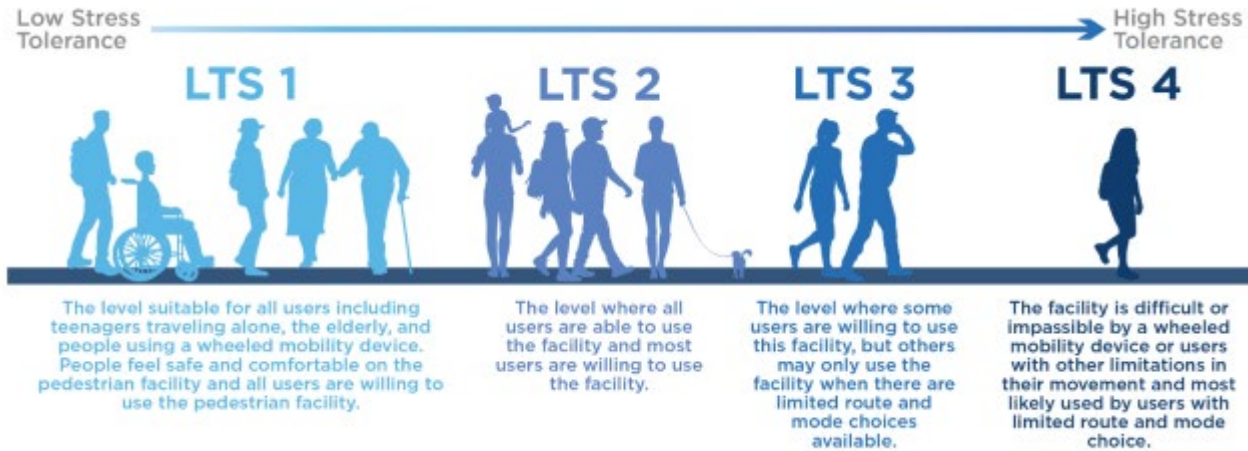
Level of Traffic Stress



Source: FDOT



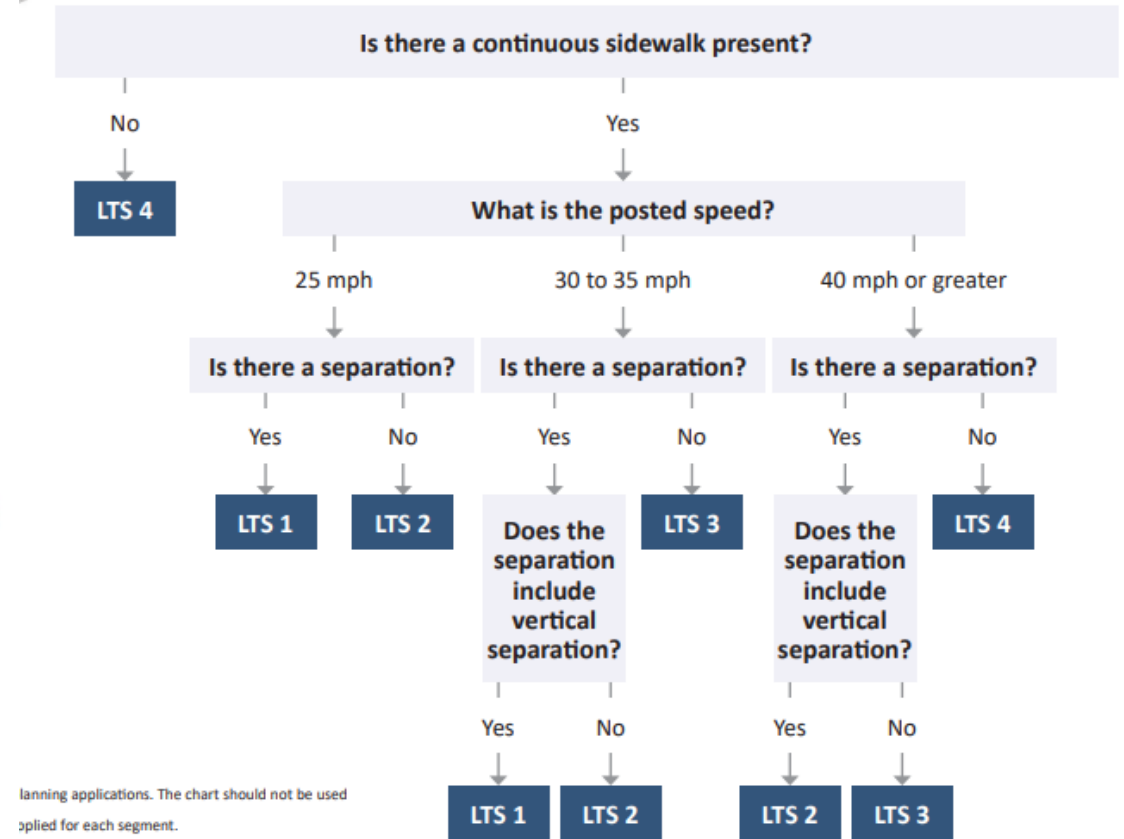
Level of Traffic Stress



Source: FDOT

Pedestrian Level of Traffic Stress Flow Chart

C2T, C3C, C3R, C4, C5, & C6

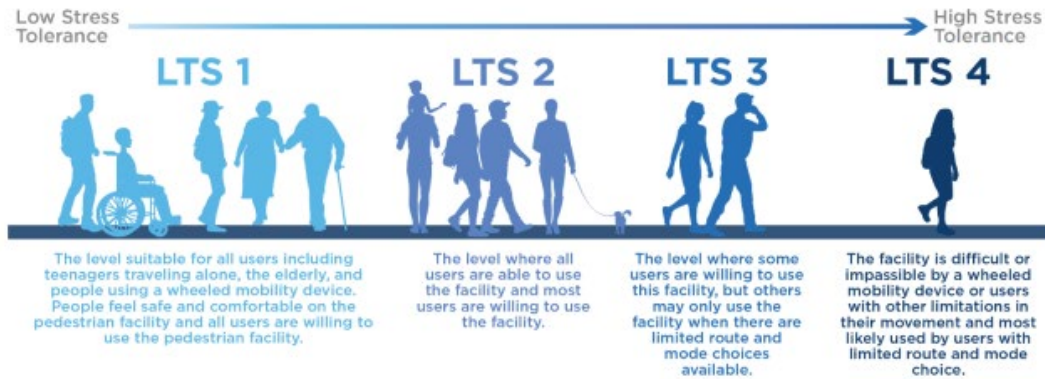


Planning applications. The chart should not be used applied for each segment.

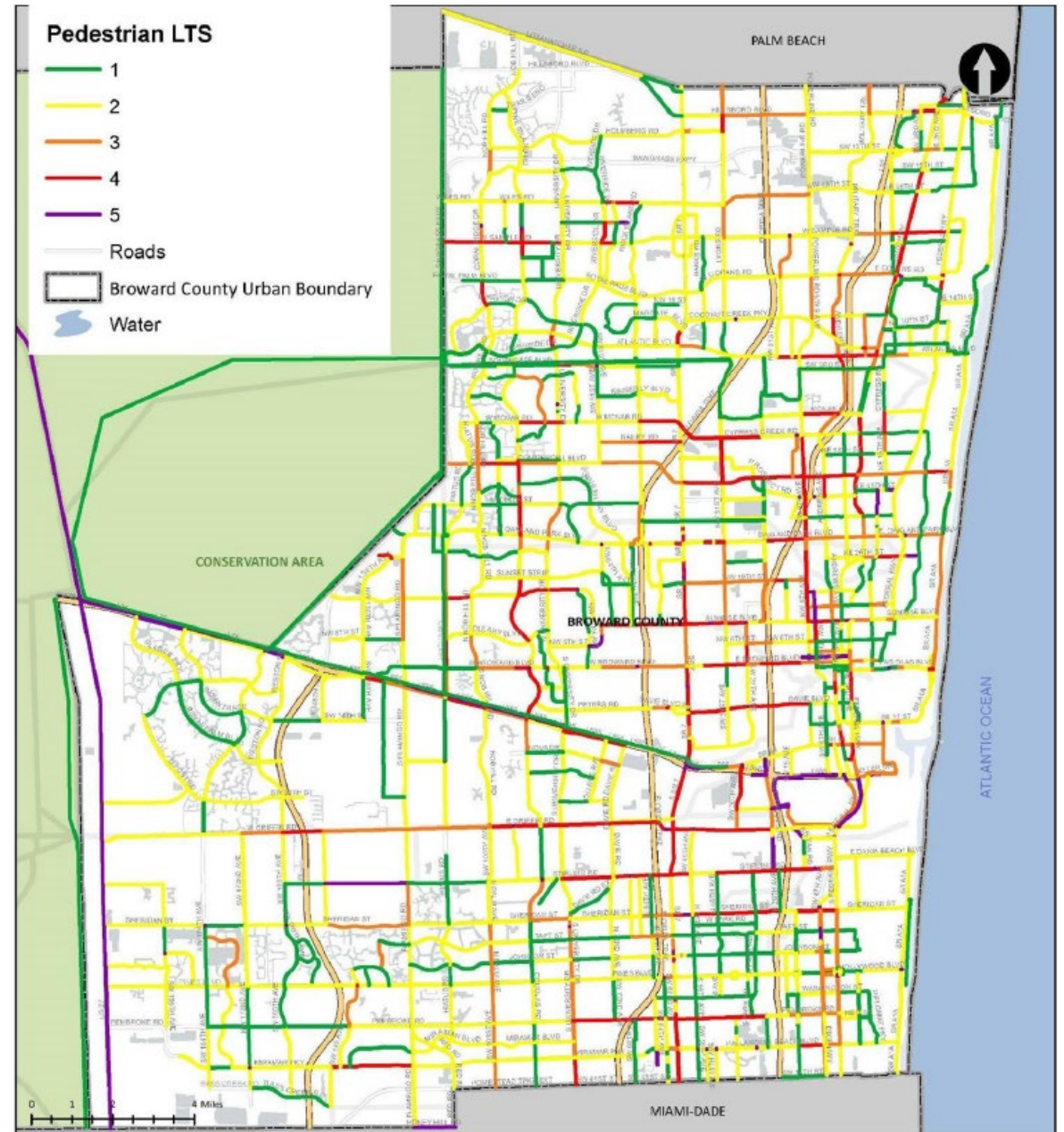
pedestrian facility and can include bicycle lanes, unmarked tubular separation in the separation includes tubular



Level of Traffic Stress



Source: FDOT



Proposed Low Stress Network



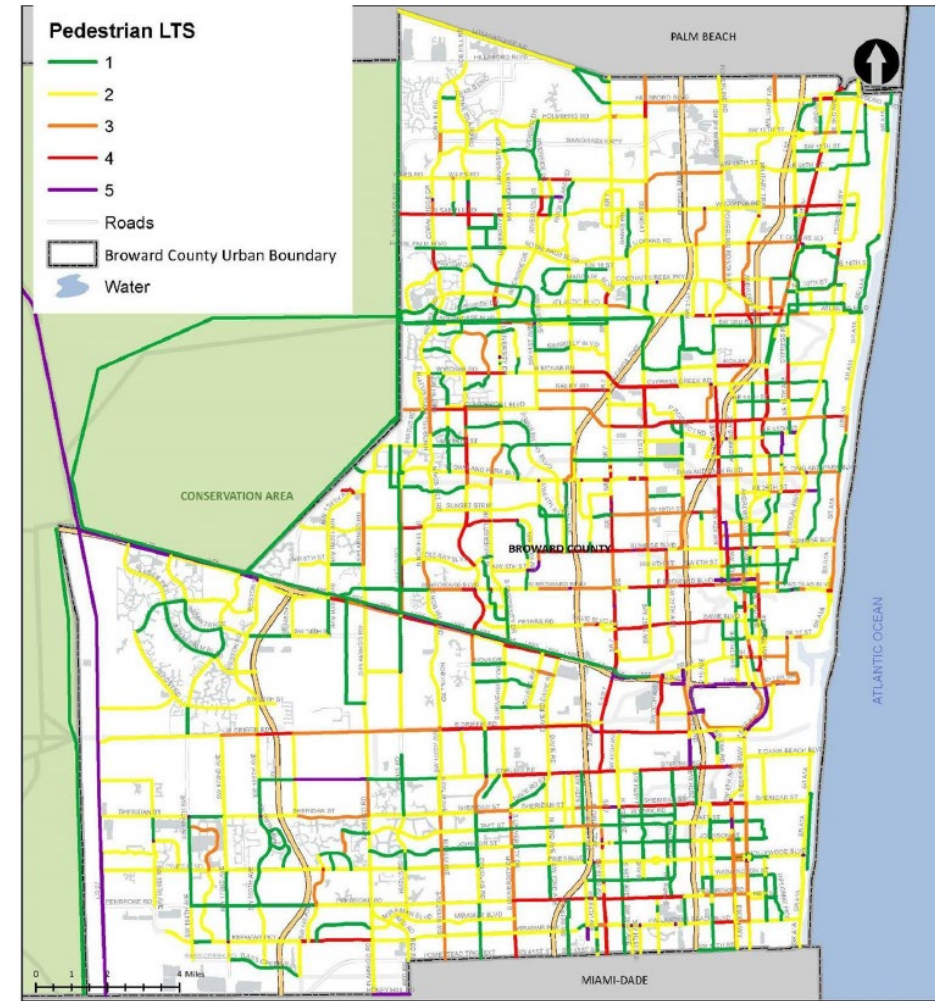
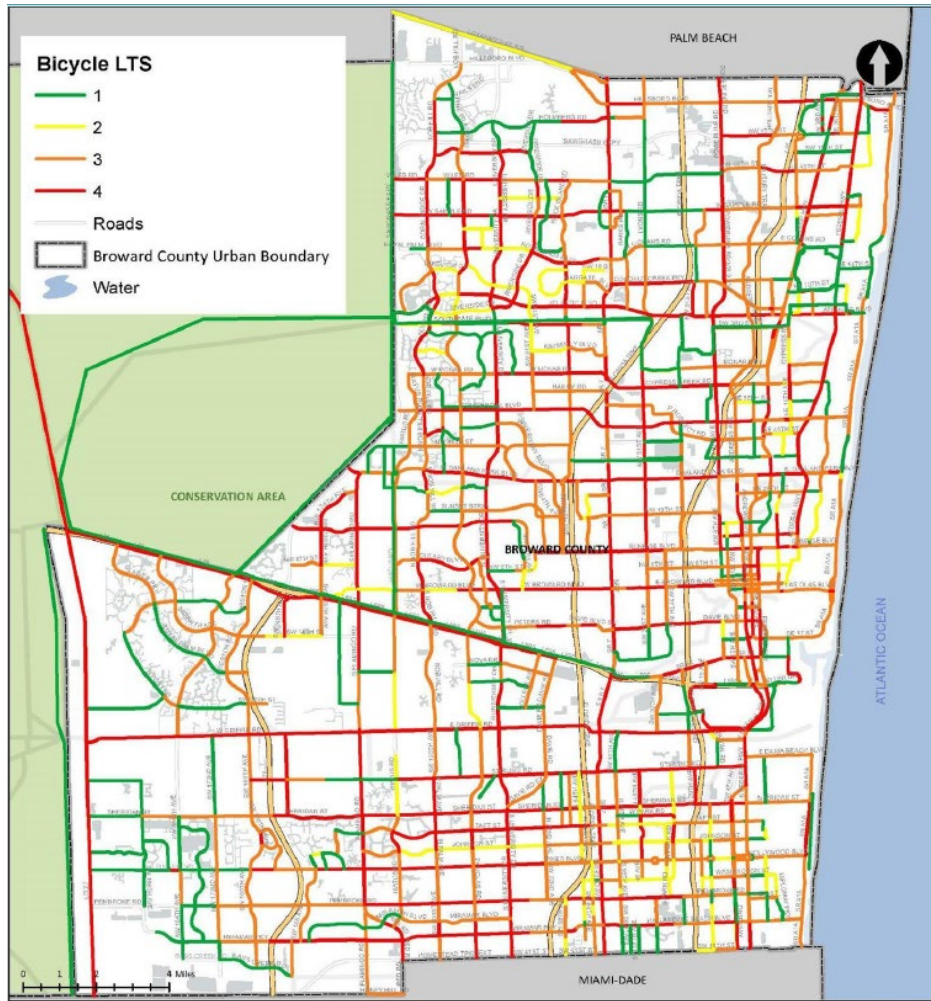
Proposed Low Stress Network

Key Analysis

- Bicycle (BLTS) and Pedestrian (PLTS) Level of Traffic Stress
- Destination Accessibility Analysis & BLTS/PLTS
- Existing Network
- Planned Projects
- Gaps & Opportunities

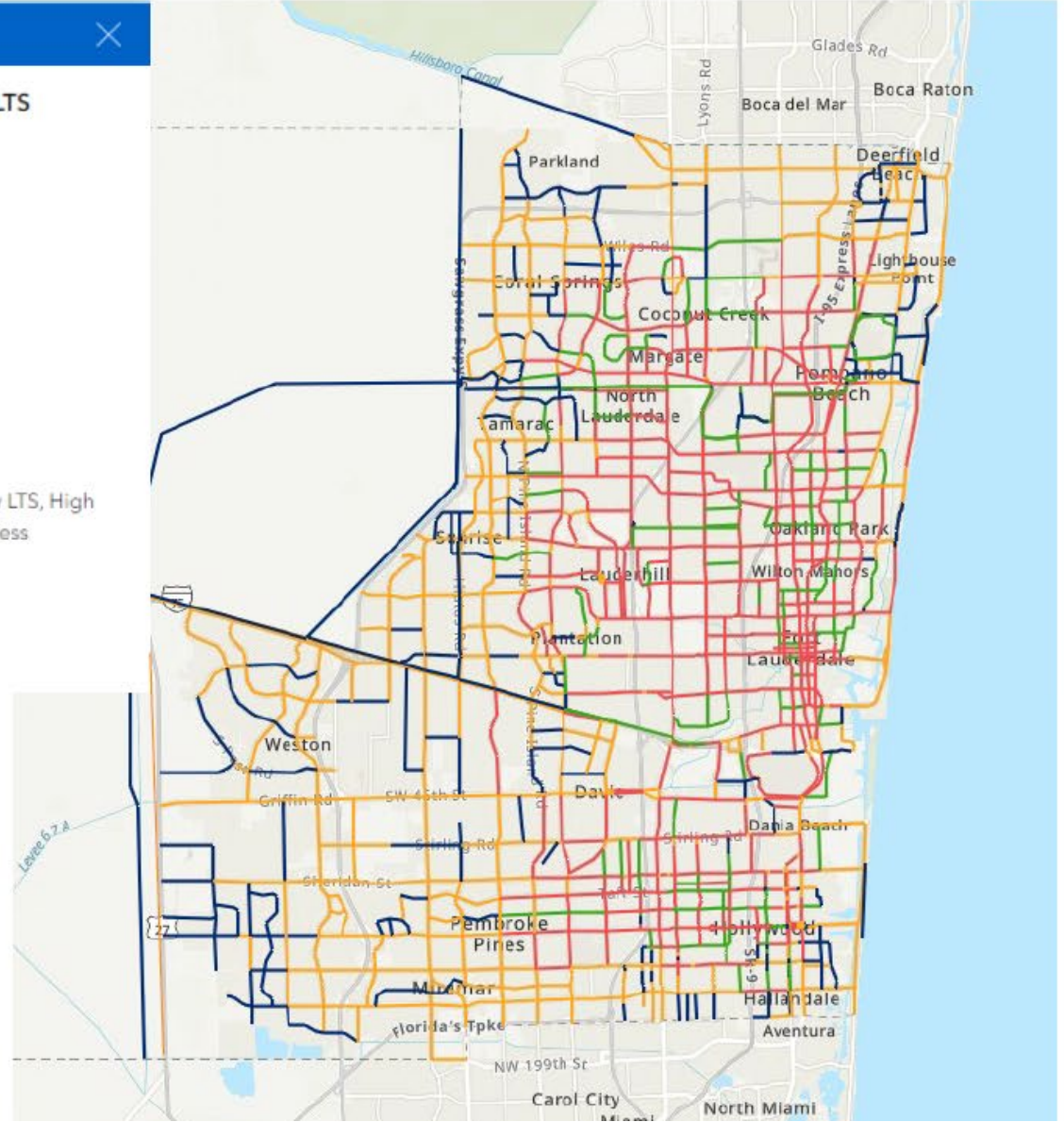
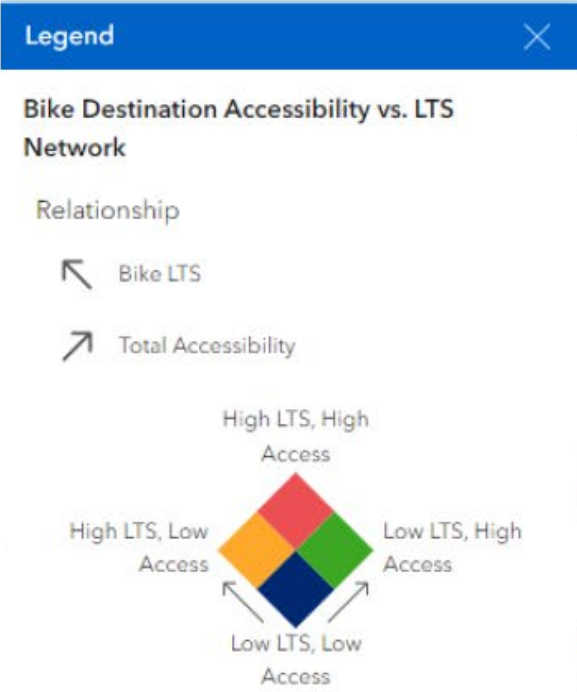


BLTS & PLTS



Accessibility Analysis & LTS

- Low BLTS/PLTS and High Access**
 - Many destinations, route is comfortable (LTS 1 or 2)
- High BLTS/PLTS and High Access**
 - Many destinations, route is uncomfortable (LTS 3 or 4)
- Low BLTS/PLTS and Low Access**
 - Not many destinations, route is comfortable (LTS 1 or 2)
- High BLTS/PLTS and Low Access**
 - Not many destinations, route is uncomfortable (LTS 3 or 4)



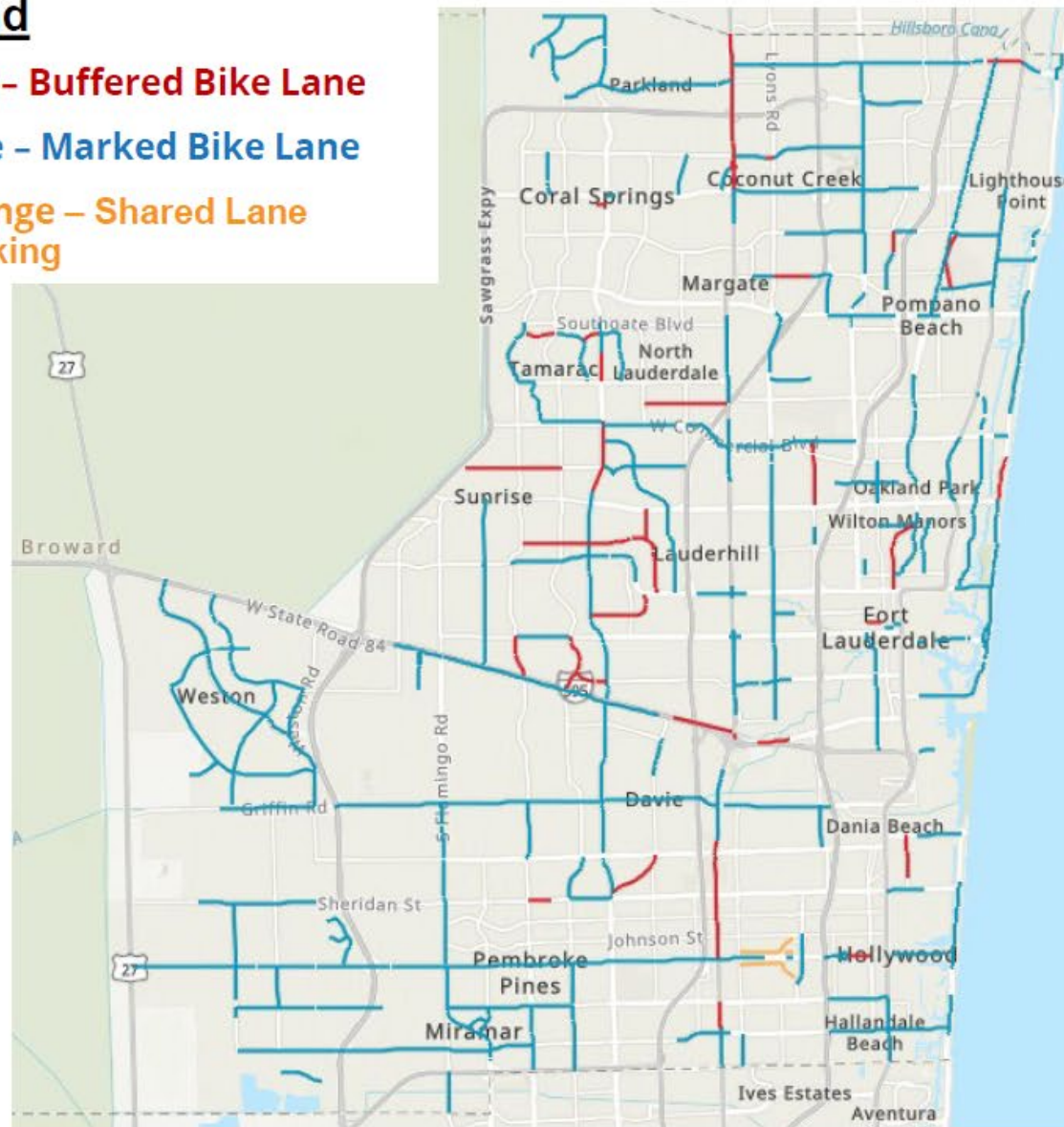
Existing Network

Data Inputs:

- Existing and Planned Bicycle Network
- Posted Speed Limit
- Number of Travel Lanes
- High Injury Network (HIN)
- Canals without Trail features
- Florida Power & Light (FPL) right-of-way

Legend

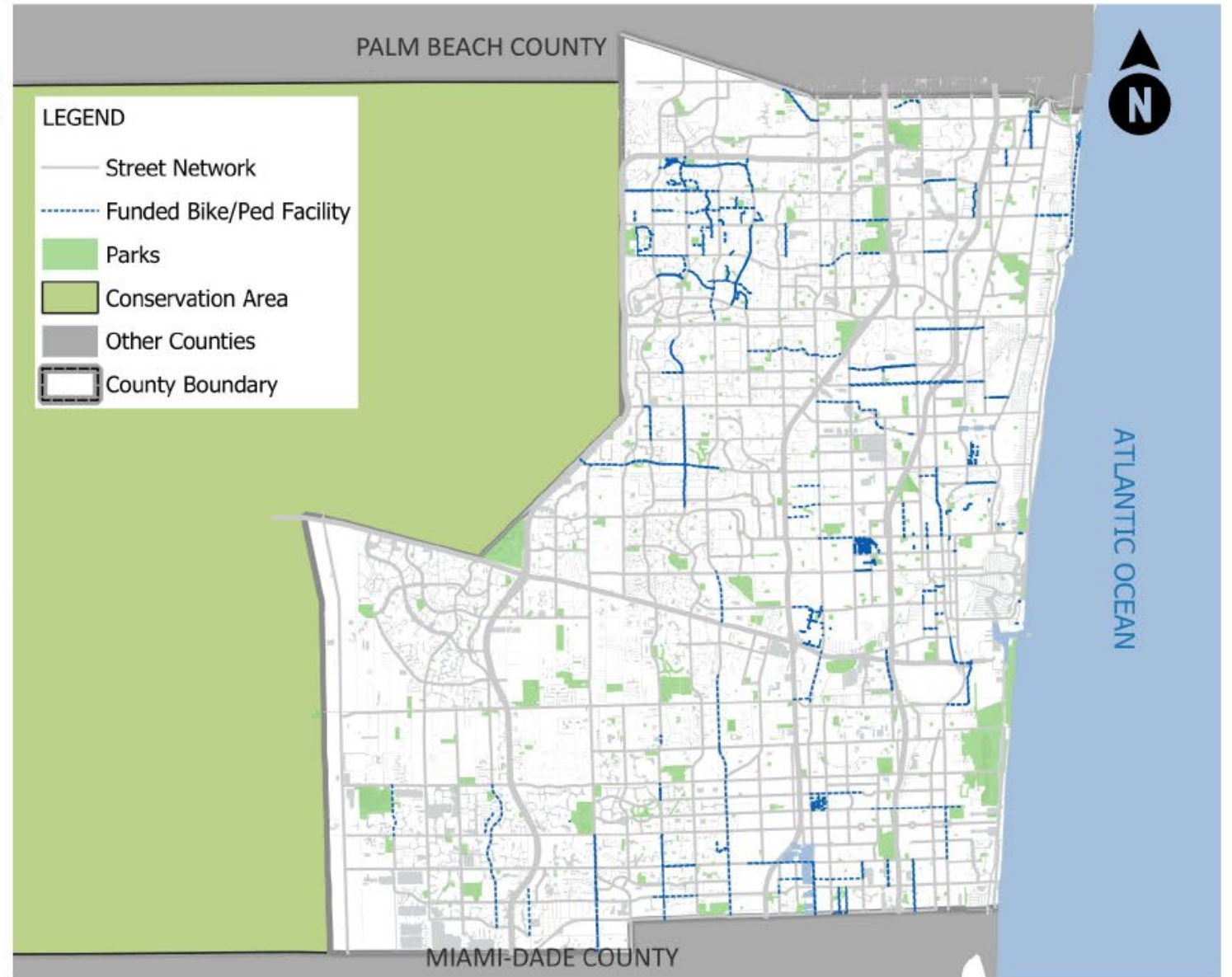
- Red - Buffered Bike Lane
- Blue - Marked Bike Lane
- Orange - Shared Lane Marking



Planned Projects

ADDITIONAL DATA INPUTS:

- Roadways with a Posted Speed Limit greater than 35 miles per hour and LTS of 3 or 4
- Planned roadway improvements, including Surtax, TIP and FDOT projects
- Super Connector Designation
 - Connections between communities that have been identified by the Broward MPO as having a high demand for walking and bicycling, trips.
 - These corridors serve as important connections between different communities to expand access to jobs, employment, healthcare and education.



Funded Bike/Ped Projects

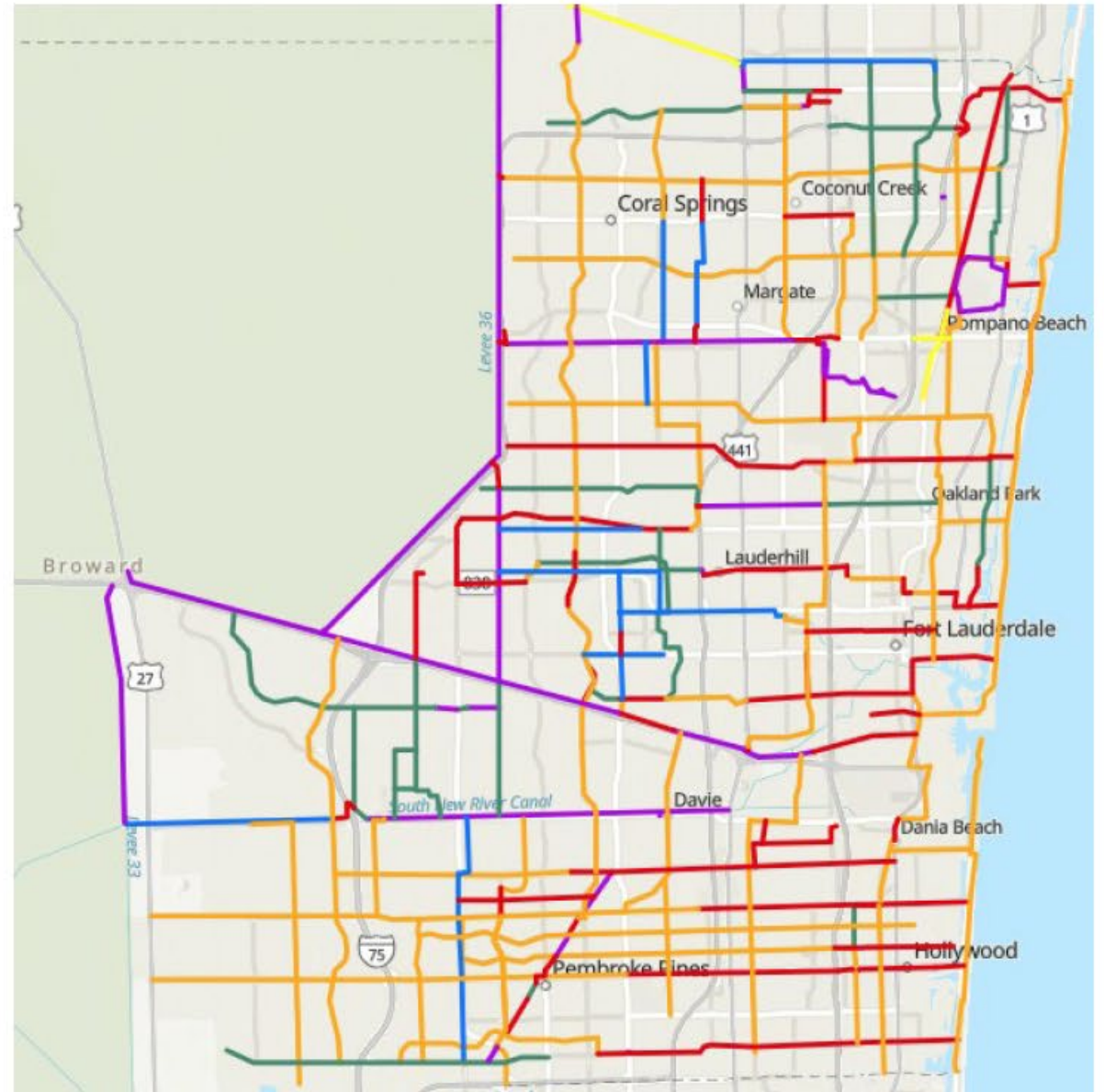


Gaps & Opportunities

Proposed Base Low Stress Network

Legend

- **Purple** – Existing Trails
- **Green** – Easy to Implement
- **Orange** – Moderate to Implement
- **Red** – Difficult to Implement/On High Injury Network
- **Blue** – Canal Opportunities
- **Yellow** – Under Construction



Crowdsource Map Introduction



MASTER ADDING COMMENTS



@ tinyurl.com/crowdsourcemap



Breakout Activity



Crowdsource Map Activity

Instructions

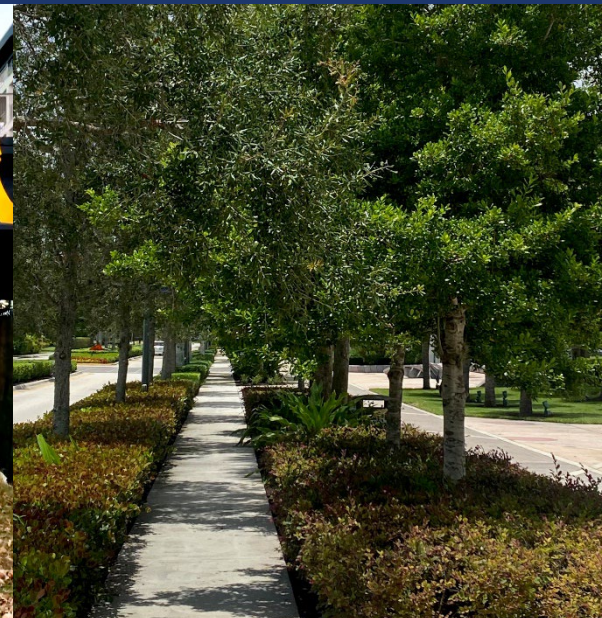
1. Add feedback on the Proposed LSN.
2. If you have an **awarded or programmed surtax** project along the LSN, please identify in the comment field.
 - the project number,
 - the overlapping segment, and
 - the Neighborhood Association
3. If you have a project **awarded or planned using other funding sources**, please identify in the comment field:
 - Funding source and project name,
 - Overlapping segment,
 - Neighborhood Association



Discussion



Questions & Answers



Virtual Meeting
April 8, 2024
Project ID: TRN212266P1