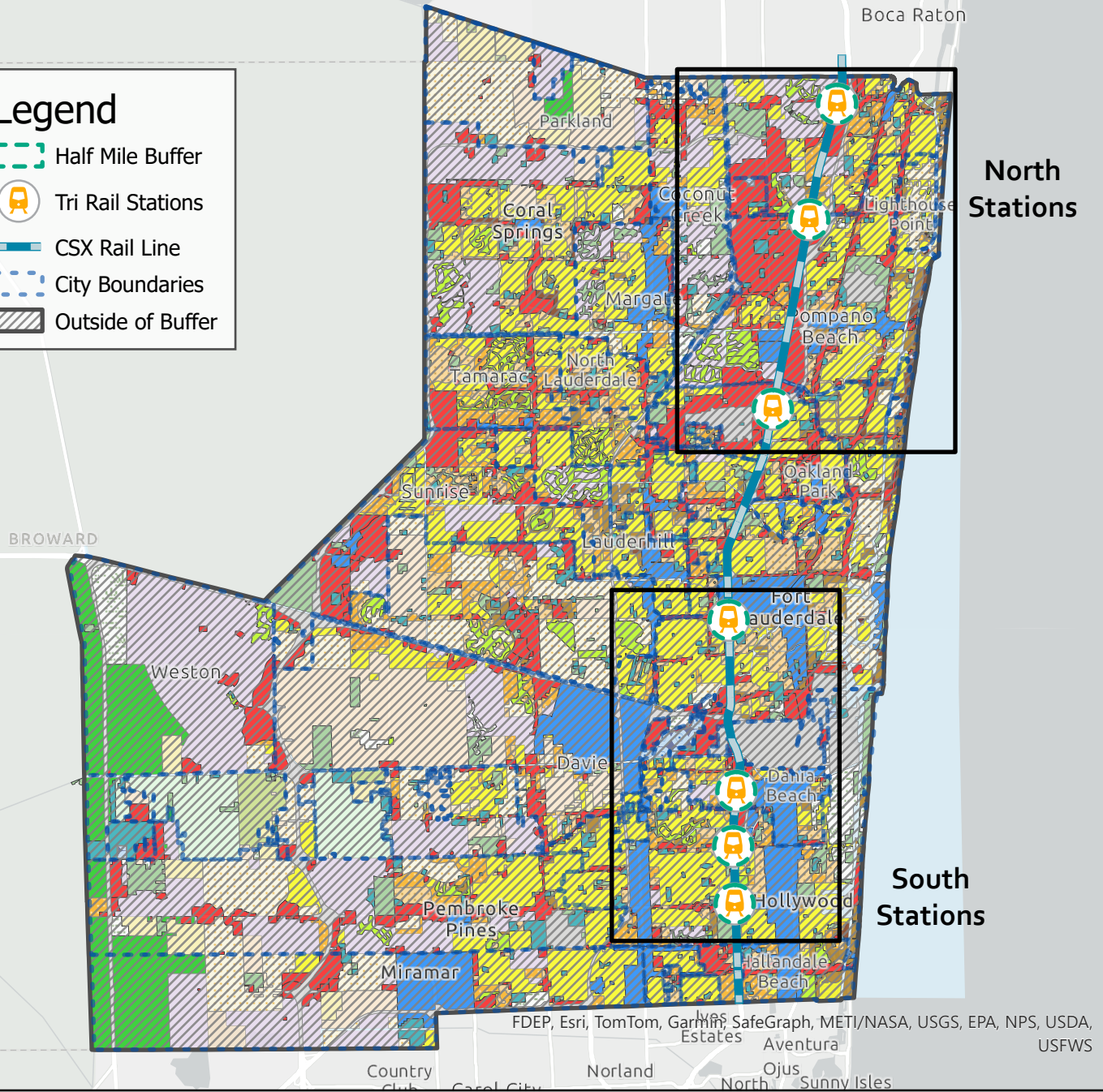


Tri Rail Stations and Future Land Use

Legend

- Half Mile Buffer
- Tri Rail Stations
- CSX Rail Line
- City Boundaries
- Outside of Buffer



Future Land Use

- | | | | |
|--|------------------------------|---|----------------------------------|
| Palm Beach County Rural Residential-10 | Low (3) Residential | Dashed-Line Area | Commercial Recreation |
| Rural Ranches | Low (5) Residential | Activity Center | Community |
| Rural Estates | Low-Medium (10) Residential | Commerce | Electrical Generation Facilities |
| Estate (1) Residential | Medium (16) Residential | Agricultural | Tribal Lands |
| Low (2) Residential | Medium-High (25) Residential | Conservation - Natural Reservations | Mining |
| Irregular Residential | High (50) Residential | Conservation - Reserve Water Supply Areas | Transportation |
| | | Recreation and Open Space | Water |

Future Land Use within a half mile buffer of Tri Rail stations along the CSX Line, North Broward.
 Disclaimer: Not to be used for legal purposes. For representation purposes only.



Prepared By: abard
 GIS Section
 Urban Planning Division
 Resilient Environment Department



Tri Rail Stations and Future Land Use

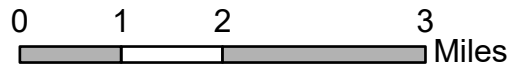


Future Land Use within a half mile buffer of Tri Rail stations along the CSX Line, North Broward.

Disclaimer: Not to be used for legal purposes. For representation purposes only.



Prepared By: abard
GIS Section
Urban Planning Division
Resilient Environment Department



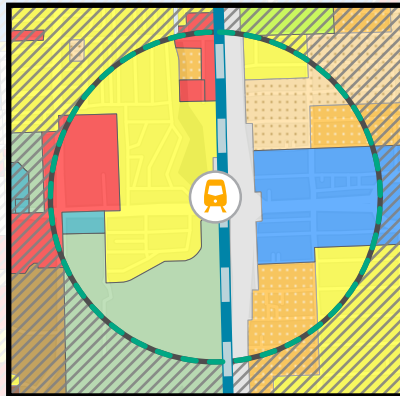
Tri Rail Stations and Future Land Use

Legend

- CSX Rail Line
- Tri Rail Stations
- Half Mile Buffer
- City Boundaries
- Outside of Buffer

STATION

Hollywood Station



Future Land Use

- Low (5) Residential
- Low-Medium (10) Residential
- Medium (16) Residential
- Medium-High (25) Residential
- High (50) Residential
- Activity Center
- Commerce
- Recreation and Open Space
- Commercial Recreation
- Community
- Transportation
- Water

STATION

Ft. Lauderdale Station

Future Land Use

- Low (5) Residential
- Low-Medium (10) Residential
- Medium (16) Residential
- Medium-High (25) Residential
- Activity Center
- Commerce
- Conservation - Natural Reservations
- Recreation and Open Space
- Community
- Transportation
- Water

STATION

Ft. Lauderdale Airport Station

Future Land Use

- Low (5) Residential
- Low-Medium (10) Residential
- Medium (16) Residential
- Irregular Residential
- Activity Center
- Commerce
- Community
- Transportation
- Water

STATION

Sheridan Street Station

Future Land Use

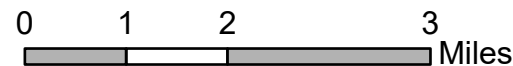
- Low (5) Residential
- Low-Medium (10) Residential
- Medium (16) Residential
- Medium-High (25) Residential
- Activity Center
- Commerce
- Recreation and Open Space
- Community
- Transportation
- Water

Future Land Use within a half mile buffer of Tri Rail stations along the CSX Line, South Broward.

Disclaimer: Not to be used for legal purposes. For representation purposes only.



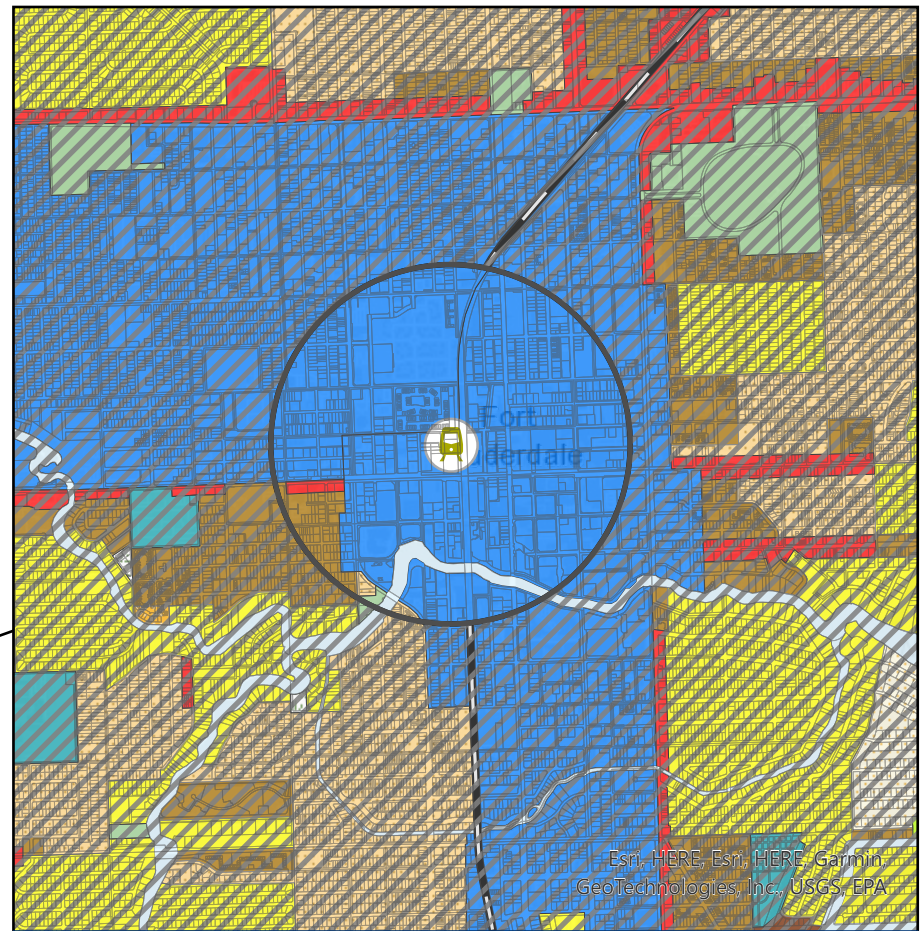
Prepared By: abard
GIS Section
Urban Planning Division
Resilient Environment Department



N



Brightline Fort Lauderdale Station and Future Land Use



Brightline Fort Lauderdale Station : Future Land Use

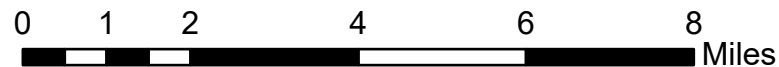
- | | | | |
|------------------------|------------------------------|---------------------------|-------------------------------------|
| PDM.BrightlineStations | Low (3) Residential | Activity Center | Water |
| Outside of Buffer | Low (5) Residential | Commerce | Conservation - Natural Reservations |
| BLStationBuffer | Low-Medium (10) Residential | Recreation and Open Space | Commercial Recreation |
| BCGIS.BoundaryUrban | Medium (16) Residential | Community | |
| FEC_Line | Medium-High (25) Residential | | |
| | High (50) Residential | | |

Future Land Use within a half mile buffer of Brightline Fort Lauderdale Station along the CSX Line, Broward.

Disclaimer: Not to be used for legal purposes. For representation purposes only.



Prepared By: anjoseph
Planning Section
Urban Planning Division
Resilient Environment Department



N

