



# Resilient Broward: Embarking on a Shared Strategy

Stakeholder Workshop

September 15, 2022



# 16 Years of Resilience Policy and Planning

## CLIMATE ACTION PLAN

**BROWARD COUNTY** Local Strategy to Address Global Climate Change  
FLORIDA



Southeast Florida Regional Climate Change Compact  
**REGIONAL CLIMATE ACTION PLAN 2.0**

*Abridged Version*

December 2017

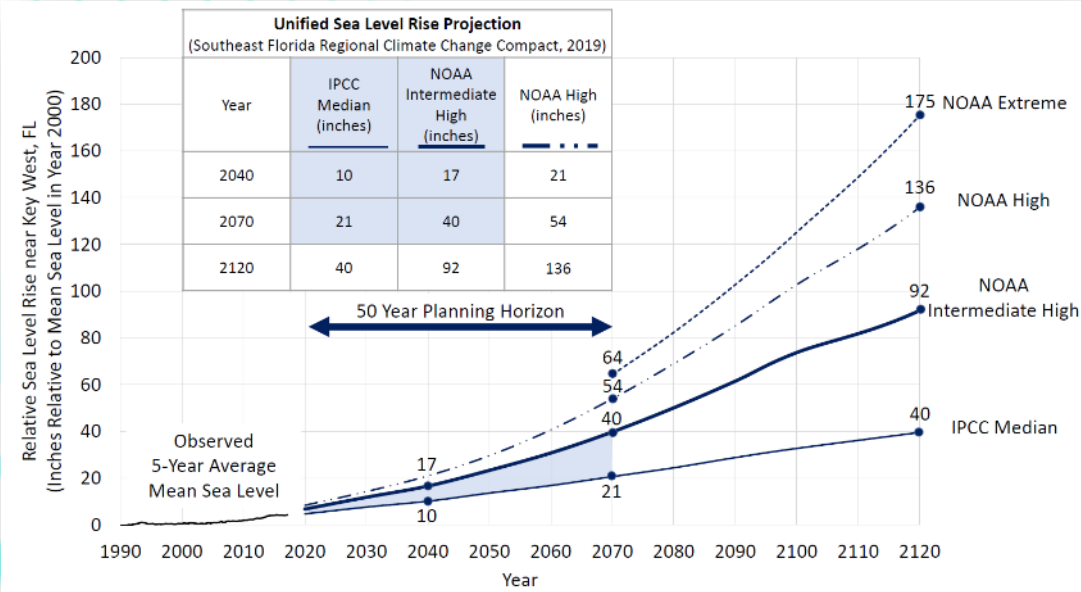


## Unified Sea Level Rise Projection Southeast Florida

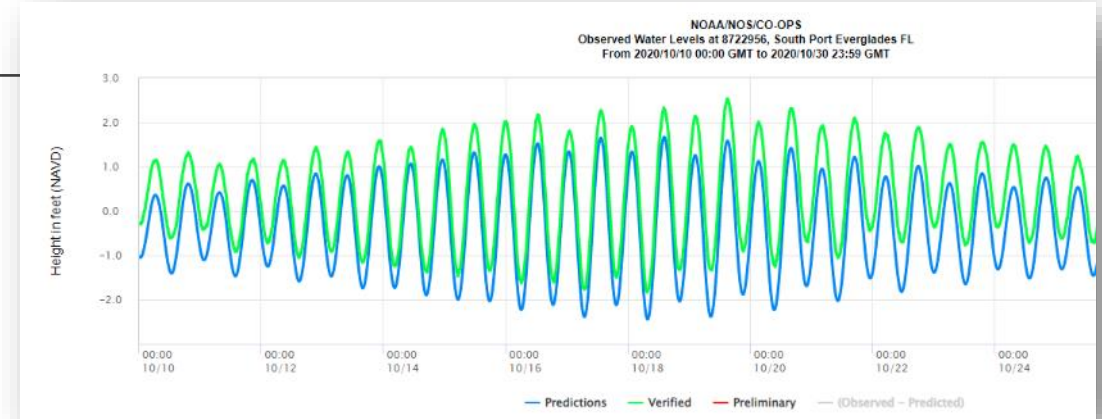
2019 UPDATE

Prepared by the  
Southeast Florida Regional Climate Change Compact's  
Sea Level Rise Ad Hoc Work Group

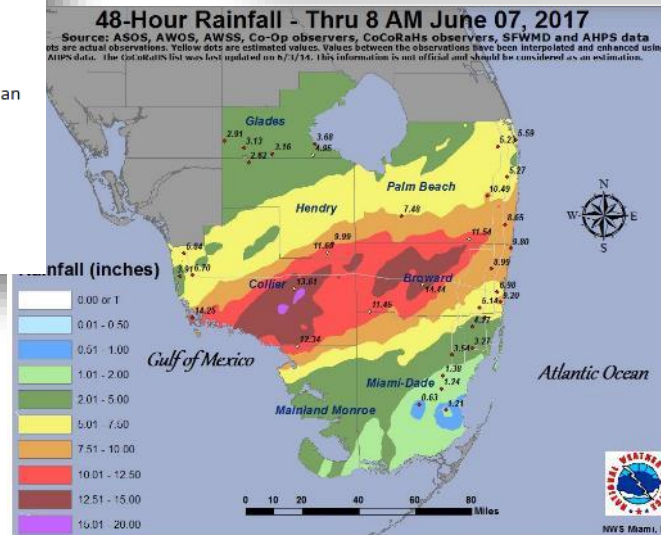
# Concurrent with Escalating Flood Factors



Sea Level Rise



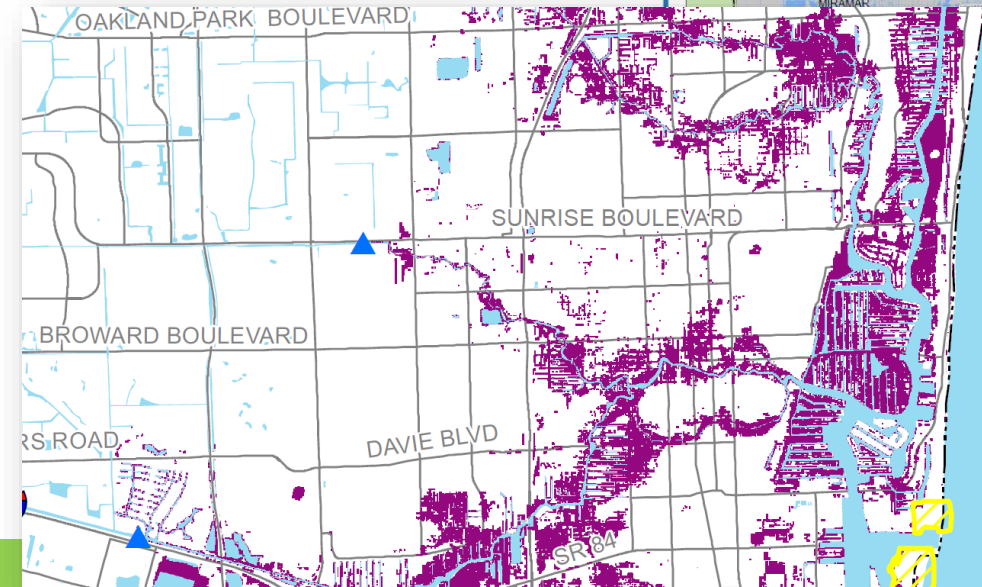
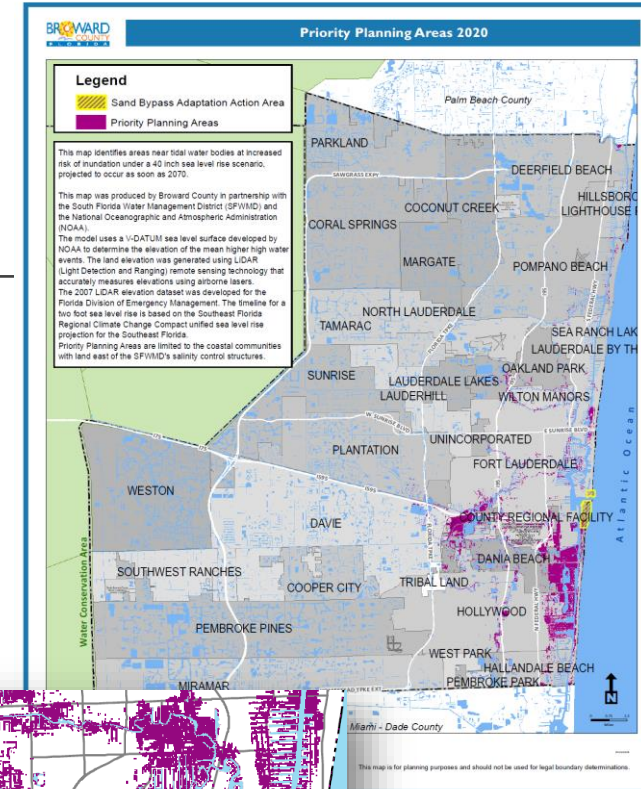
Tides and Surge



Rainfall

# Driving Resilience Standards

- Priority Planning Area Map
- Resilience Standards
  - Drainage infrastructure - 2017
  - Tidal flood barriers - 2020
  - 100-Yr Flood elevations - 2020
  - Design storms - 2020



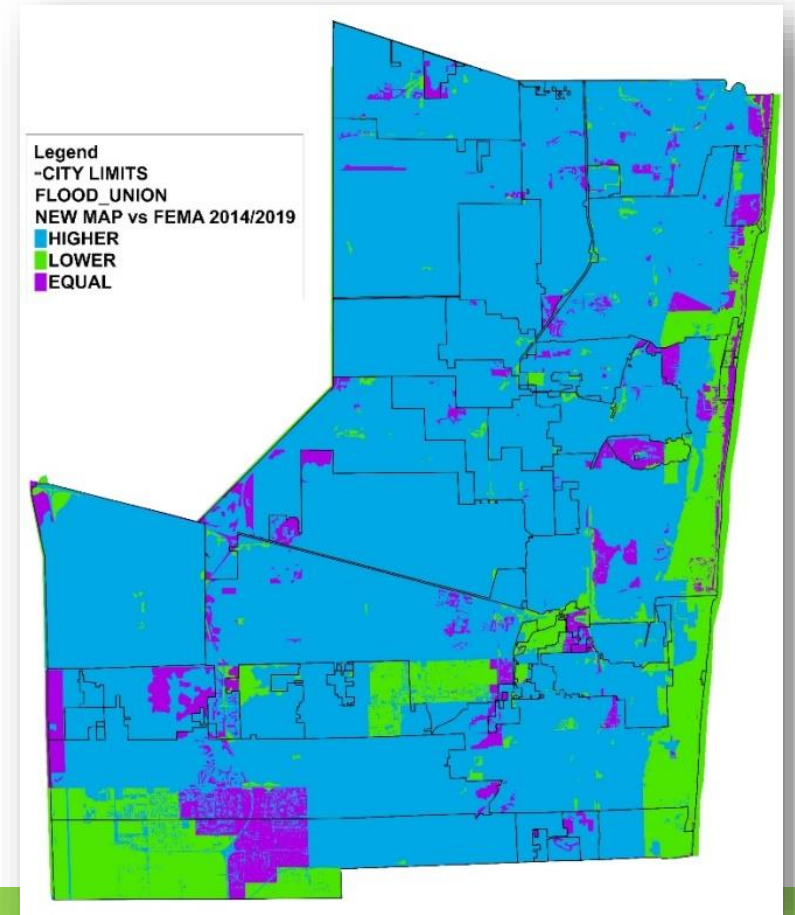
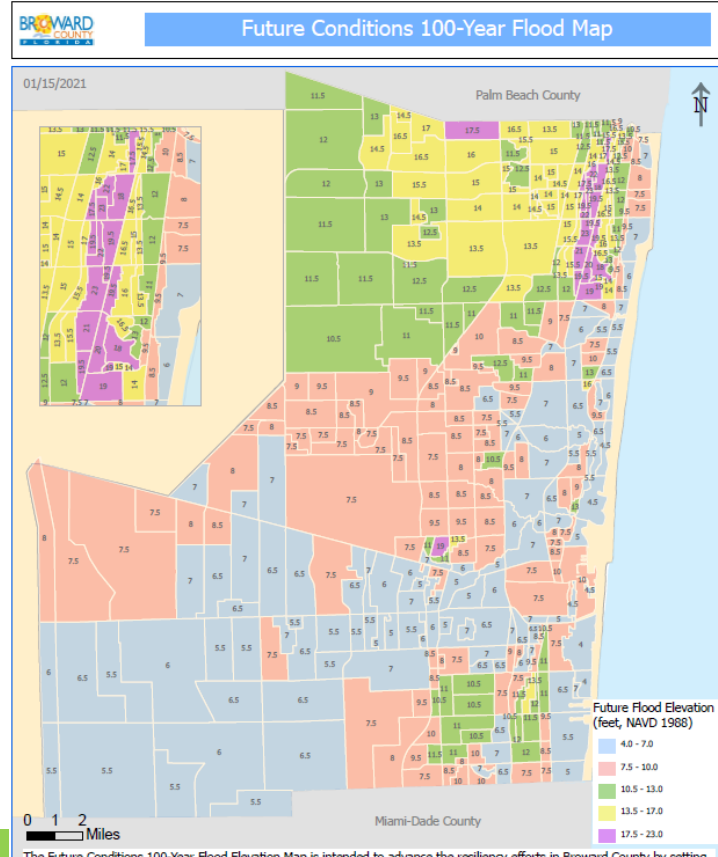
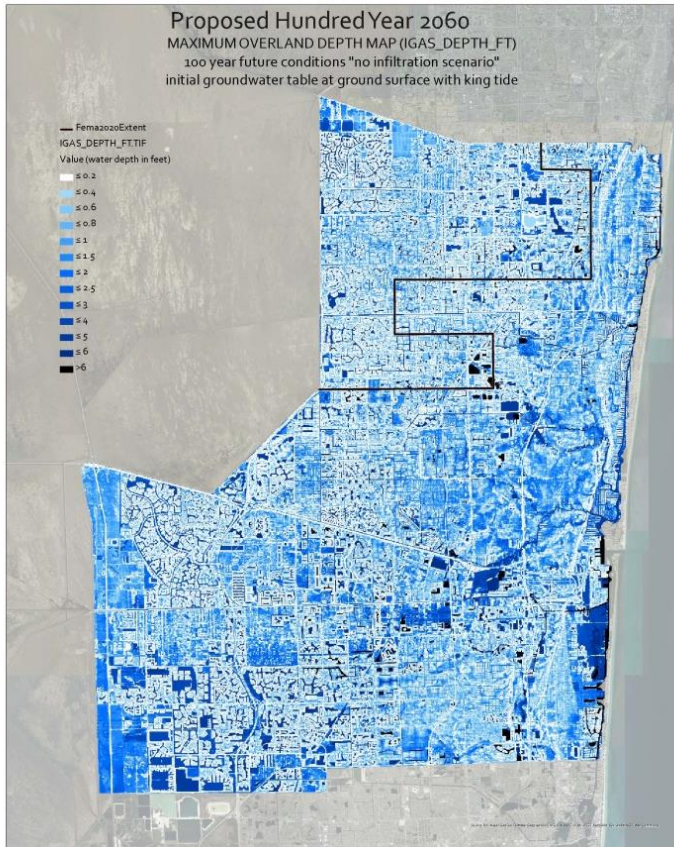
# Inspiring Projects, Plans and Opportunity



# Yet, Limitations Persist

## Flood Map Update

- 2 Feet SLR
- King tides
- Ground saturation
- Increase rainfall (13%)
- No surge



# Strong Economic Basis for Action



U.S. PUBLIC FINANCE

MOODY'S  
INVESTORS SERVICE

SECTOR IN-DEPTH  
24 September 2019

Local government – US  
Growing exposure to heat stress mitigated by economic and fiscal strengths

Rate this Research

**Economic and fiscal strengths support credit quality for many local governments with high or very high exposure to heat stress.** Heat stress threatens to cause local governments to pay unanticipated costs for emergency response, infrastructure repair and adaptive strategies. Nevertheless, the Southeast and Midwest each have various strengths



LLOYD'S

Lloyd's Innovation team

Cities of the future



LLOYD'S

About | Culture | Partner

News and risk insight | Market dinner

Risk insight



U.S. PUBLIC FINANCE

MOODY'S  
INVESTORS SERVICE

SECTOR IN-DEPTH  
28 November 2017

Environmental risks  
Evaluating the impact of climate change on US state and local issuers

Rate this Research

## Milliman to design new flood risk rating plan for NFIP

16th November 2017 - Author: Staff Writer

The Federal Emergency Management Agency (FEMA) has selected flood risk innovator Milliman to design a new rating plan for National Flood Insurance Programme (NFIP) policies nationwide.

## BlackRock CEO says climate crisis will trigger 'a fundamental reshaping of finance'

Climate change could be a bigger financial crisis than the 1970s inflation spike, the dot-com bubble and the Great Recession, BlackRock CEO Larry Fink said.

# SE FL Business Case for Resilience

## Project Purpose

To identify the **return on investment** for resilience and adaptation measures in Southeast Florida.



## Key Findings



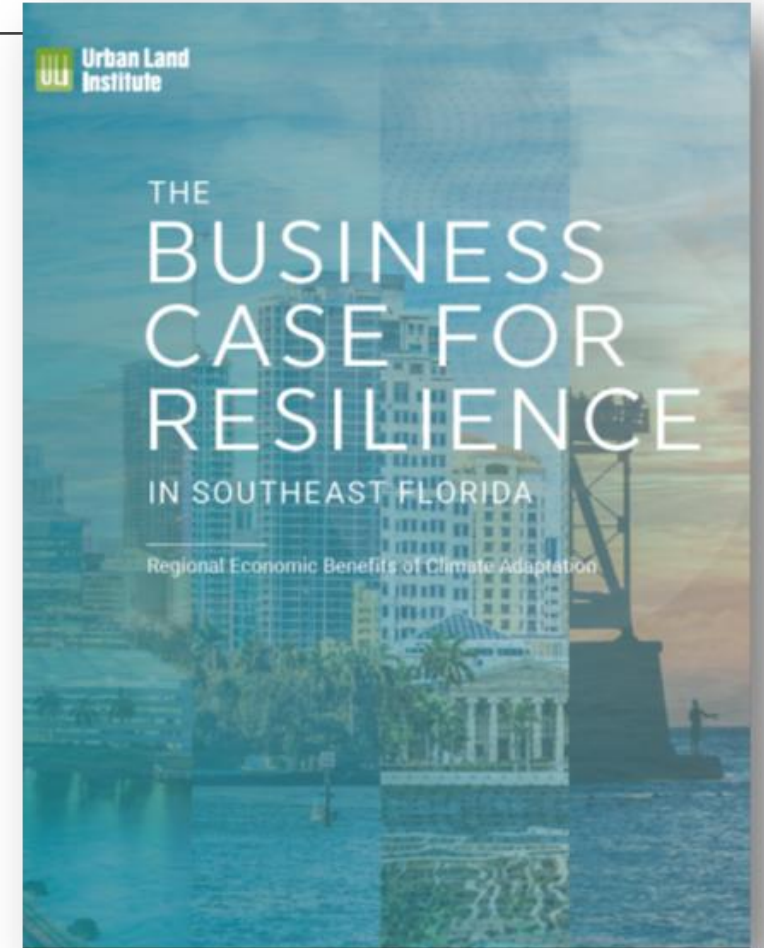
There is a **regional business case** for resilience in Southeast Florida.

**4:1**

**Building-level** adaptation strategies outweigh the costs 4:1

**2:1**

**Community-wide** adaptation strategies outweigh the costs 2:1



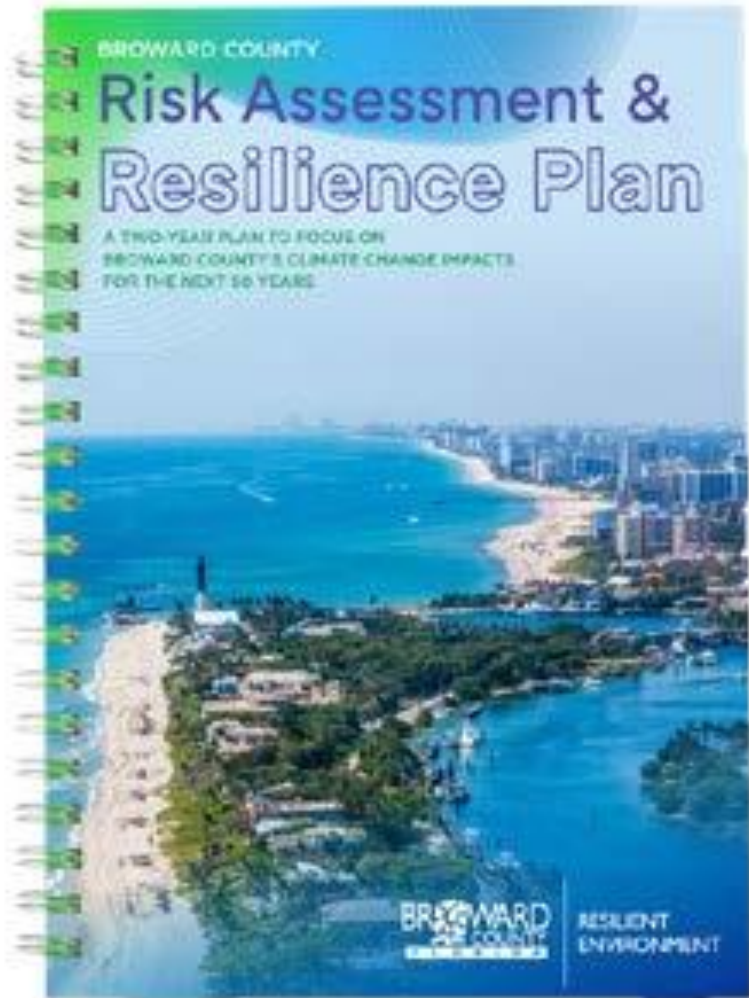


# Endorsed by Leadership 2019 Resilience Roundtable



# The Response?

## A Community-wide Resilience Plan



### Integrate

Hydrologic modeling, risk analytics and economic analyses

### Inform

County-wide infrastructure improvement plan and redevelopment strategies

### Form

Foundation for collective mitigation of future flooding

### Provide

Platform and written plan to guide regional planning, investment and project tracking



# Communications & Engagement

---



## **BROWARD'S RESILIENCE PLAN**

---

### Resilience in the Making – A 2-year Planning Effort

Broward County's Resilient Environment Department has launched a two-year county-wide resilience planning effort focused on building community resilience to the impacts of climate change predicted over the next half century, with a primary focus on flood and heat mitigation.

This effort is being undertaken with the collective support of municipal and business leadership who meet annually to discuss the resilience needs of the Broward community, sea level rise, more intense rainfall, and clean energy initiatives needed to reduce the overall impacts of climate change.

- 20-Member Steering Committee
- Dedicated Website
- Workshops
- Quarterly Digests



[Broward.org/Resilience/Plan](https://Broward.org/Resilience/Plan)

[Broward.org/resilience/plan](https://Broward.org/resilience/plan)

# Outcomes

---

- Actionable infrastructure improvement and redevelopment plan
- Coordinated water management allocations
- Phased multi-decade investments and funding framework
- Boundary conditions for more detailed municipal analyses
- Single source of truth based on aggregate data
- Meet all requirements for project cost share under state resilience plan

# Summary

---

- Broward Resilience Plan represents a collective, multi-year endorsement
- Goal is to provide a coordinated basis for organized investment in flood risk reduction
- Municipal input and knowledge is vital to a high quality and relevant work product
- Strengthen regional posture for large-scale funding/finance and sustained economic investment
- We need your support, contributions, and expertise



# Questions ?

**DR. JENNIFER JURADO**

Chief Resilience Officer, Deputy Director  
Resilient Environment Department

[jjurado@broward.org](mailto:jjurado@broward.org)

954-519-1464



RESILIENT  
ENVIRONMENT